

KALEA

*Bay*

**Tower 100**

Coastal living has never quite been so chic, so contemporary, or so cool



Located just off Vanderbilt Drive in North Naples, Kalea Bay is a resort-style community encompassing five towers, each uniquely positioned to take advantage of preserve and water views

#### Tower 1 coastal concept

- Resort-style, gated community
- 120 Residences
- Light-filled residences with direct sunset views
- Finished residences ranging from 3 bedroom + den/3.5 bath to 4 bedroom/4 bath
- Over 3,200 sq. ft. of living space
- 9-foot ceilings except where dropped
- Private elevator entrance
- Generously wide lanais with transparent glass rails
- Fully wired tech-savvy features
- Rooftop pool
- Rooftop fitness center & sky lounge
- Pet-friendly community

#### Interiors with a coastal flair

- Fully equipped utility room
- 2 En suite guest bedrooms
- Oversized walk-in closet in master bedroom
- Spacious laundry room with washer/dryer
- Sunset views through ceiling-to-floor windows and doors
- Oversized den or 4th bedroom

#### Kalea Bay clubhouse amenities:

- Amenity-rich clubhouse
- Internet café
- Adults only pool
- Children's pool
- Pool deck bar
- Indoor/outdoor restaurant
- Snack bar
- Shuttle service to beach access
- Tennis pavilion with 4 Har-Tru tennis and 8 pickle ball courts
- 24 Guest suites



**KALEA**  
Bay

AGENCY239 - NAPLES REAL ESTATE TEAM | 239.438.1102 | KALEABAYNAPLES.COM

Exclusive Sales  
& Marketing by  
Wilson & Associates



ORAL REPRESENTATIONS CANNOT BE RELIED UPON AS CORRECTLY STATING REPRESENTATIONS OF THE DEVELOPER. FOR CORRECT REPRESENTATIONS, MAKE REFERENCE TO THIS BROCHURE AND TO THE DOCUMENTS REQUIRED BY CHAPTER 718.503, FLORIDA STATUTES, TO BE FURNISHED BY A DEVELOPER TO A BUYER OR LESSEE.

**Seave**  
REAL ESTATE



# Our kitchens and bathrooms are going **coastal**



The kitchens at Kalea Bay will feature an open design for today's lifestyle that blends the kitchen seamlessly into the living and dining rooms, perfect for today's hosts and hostesses. The bathrooms are well-appointed, spacious and perfect in every way. Both are beautiful, yet functional, and so too, is Kalea Bay.

## Coastal cooks love our gourmet kitchens

- Large open custom kitchens
- Downsview® luxury cabinetry
- Wolf® and Sub-Zero® appliances
- 48' side-by-side Sub-Zero® refrigerator
- Natural gas range
- Butler's pantry
- Quartz countertops
- Counter-height oversized island with a 3" mitered waterfall edge

## Bathrooms with coastal conveniences

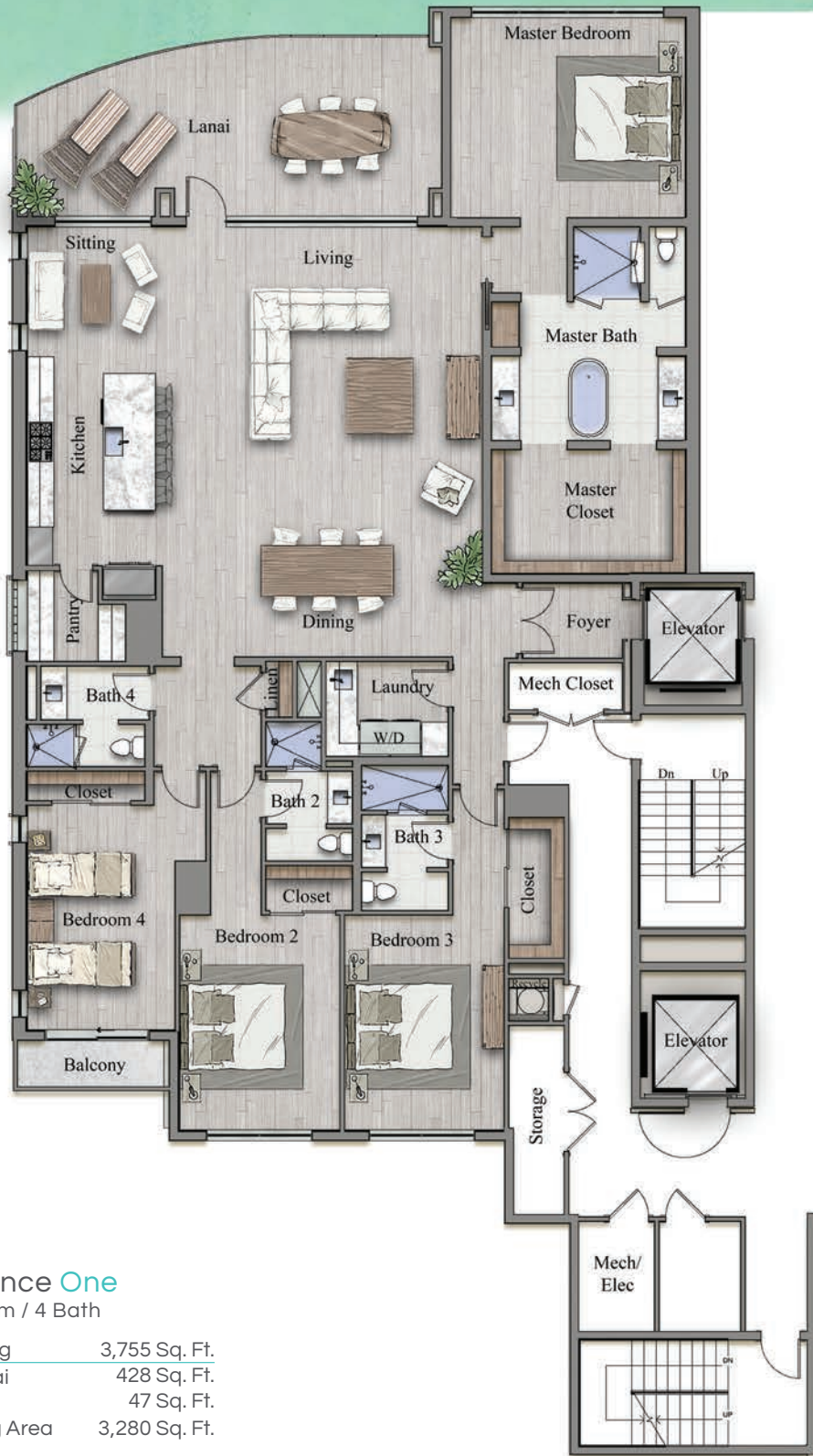
- Downsview® cabinetry
- Dual vanities in Master bath
- Quartz countertops
- Rohl® bathroom fixtures
- Spacious soaking tub in Master bath
- Glass-enclosed shower



**KALEA**  
*Bay*

AGENCY239 - NAPLES REAL ESTATE TEAM | 239.438.1102 | KALEABAYNAPLES.COM





**Residence One**  
4 Bedroom / 4 Bath

Total Living	3,755 Sq. Ft.
Area Lanai	428 Sq. Ft.
Balcony	47 Sq. Ft.
A/C Living Area	3,280 Sq. Ft.

ORAL REPRESENTATIONS CANNOT BE RELIED UPON AS CORRECTLY STATING REPRESENTATIONS OF THE DEVELOPER. FOR CORRECT REPRESENTATIONS, MAKE REFERENCE TO THIS BROCHURE AND TO THE DOCUMENTS REQUIRED BY CHAPTER 718.503, FLORIDA STATUTES, TO BE FURNISHED BY A DEVELOPER TO A BUYER OR LESSEE.



**Residence Two**

3 Bedroom / 3.5 Bath + Den

Total Living	3,835 Sq. Ft.
Area Lanai	508 Sq. Ft.
Balcony	47 Sq. Ft.
A/C Living Area	3,280 Sq. Ft.

ORAL REPRESENTATIONS CANNOT BE RELIED UPON AS CORRECTLY STATING REPRESENTATIONS OF THE DEVELOPER. FOR CORRECT REPRESENTATIONS, MAKE REFERENCE TO THIS BROCHURE AND TO THE DOCUMENTS REQUIRED BY CHAPTER 718.503, FLORIDA STATUTES, TO BE FURNISHED BY A DEVELOPER TO A BUYER OR LESSEE.





### Residence Three

4 Bedroom / 4 Bath

Total Living	3,921 Sq. Ft.
Area Lanai	594 Sq. Ft.
Balcony	47 Sq. Ft.
A/C Living Area	3,280 Sq. Ft.

ORAL REPRESENTATIONS CANNOT BE RELIED UPON AS CORRECTLY STATING REPRESENTATIONS OF THE DEVELOPER. FOR CORRECT REPRESENTATIONS, MAKE REFERENCE TO THIS BROCHURE AND TO THE DOCUMENTS REQUIRED BY CHAPTER 718.503, FLORIDA STATUTES, TO BE FURNISHED BY A DEVELOPER TO A BUYER OR LESSEE.



**Residence Four**  
4 Bedroom / 4 Bath

Total Living	3,921 Sq. Ft.
Area Lanai	594 Sq. Ft.
Balcony	47 Sq. Ft.
A/C Living Area	3,280 Sq. Ft.

ORAL REPRESENTATIONS CANNOT BE RELIED UPON AS CORRECTLY STATING REPRESENTATIONS OF THE DEVELOPER. FOR CORRECT REPRESENTATIONS, MAKE REFERENCE TO THIS BROCHURE AND TO THE DOCUMENTS REQUIRED BY CHAPTER 718.503, FLORIDA STATUTES, TO BE FURNISHED BY A DEVELOPER TO A BUYER OR LESSEE.





**Residence Five**

3 Bedroom / 3.5 Bath + Den

Total Living	3,835 Sq. Ft.
Area Lanai	508 Sq. Ft.
Balcony	47 Sq. Ft.
A/C Living Area	3,280 Sq. Ft.

ORAL REPRESENTATIONS CANNOT BE RELIED UPON AS CORRECTLY STATING REPRESENTATIONS OF THE DEVELOPER. FOR CORRECT REPRESENTATIONS, MAKE REFERENCE TO THIS BROCHURE AND TO THE DOCUMENTS REQUIRED BY CHAPTER 718.503, FLORIDA STATUTES, TO BE FURNISHED BY A DEVELOPER TO A BUYER OR LESSEE.





**Residence Six**

4 Bedroom / 4 Bath

Total Living	3,755 Sq. Ft.
Area Lanai	428 Sq. Ft.
Balcony	47 Sq. Ft.
A/C Living Area	3,280 Sq. Ft.

ORAL REPRESENTATIONS CANNOT BE RELIED UPON AS CORRECTLY STATING REPRESENTATIONS OF THE DEVELOPER. FOR CORRECT REPRESENTATIONS, MAKE REFERENCE TO THIS BROCHURE AND TO THE DOCUMENTS REQUIRED BY CHAPTER 718.503, FLORIDA STATUTES, TO BE FURNISHED BY A DEVELOPER TO A BUYER OR LESSEE.

# Coastal Development & Beyond



Responsible real estate development in Southwest Florida requires years of experience and a commitment to the land, as well as to the people who live here. In Naples, award-winning developer Anthony Soave of Soave Enterprises has teamed up with Richard Corace, CEO of NxTOne Advisors and founding partner of Signature Communities.

**ANTHONY SOAVE**  
Owner & Chairman



**RICHARD CORACE**  
CEO & President

Lifetime friends and partners, the team has developed some of the most outstanding real estate developments in Southwest Florida. Tony and Dick's first project together began more than 15 years ago. Since that time the dynamic duo have completed:

**Regatta** - a waterfront condominium project complete with 55 boat slips located in the Vanderbilt Beach area near the Ritz-Carlton Naples

**The Dunes** - located in North Naples, it includes seven towers housing 641 residences with views of the Gulf of Mexico

**Moraya Bay** - an award-winning, luxury condominium project, located on the beach consisting of 72 residences



*Regatta*



*The Dunes*



*Moraya Bay*



*Brambleton*

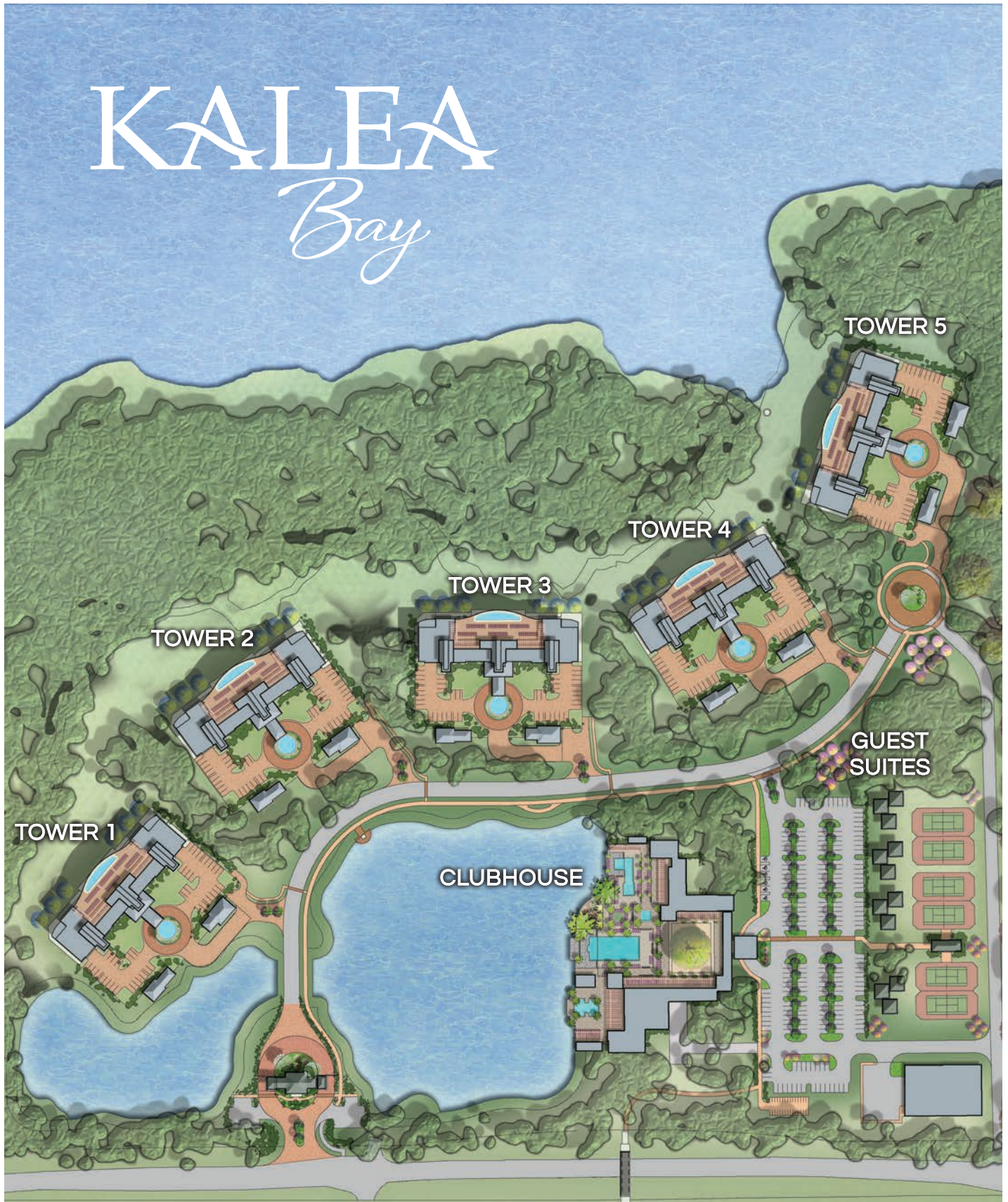
Soave's residential background has roots not only in Southwest Florida, but also Southeast Michigan and Northern Virginia, where the company's Brambleton community has consistently been ranked in the top 15 Planned Unit Developments (PUDs) in the country. Dick's, former company, Signature Communities, has more than 25 years of experience in the industry with over 5,000 homes and condominiums in Naples alone.





Site Plan

# KALEA Bay



ORAL REPRESENTATIONS CANNOT BE RELIED UPON AS CORRECTLY STATING REPRESENTATIONS OF THE DEVELOPER. FOR CORRECT REPRESENTATIONS, MAKE REFERENCE TO THIS BROCHURE AND TO THE DOCUMENTS REQUIRED BY CHAPTER 718.503, FLORIDA STATUTES, TO BE FURNISHED BY A DEVELOPER TO A BUYER OR LESSEE.

